

## Safety first

Understanding how deep disposal underground helps keep people safe  
Page 3

## Going green

The environment is firmly at the heart of building a GDF  
Page 4

## Join us!

Your Community Partnership is looking for members  
Page 7



**Theddlethorpe**  
GDF Community Partnership

Issue 4: June 2023

**THEDDLETHORPE  
& MABLETHORPE**

# GDF

# Voice

SUPPORTING COMMUNITY ENGAGEMENT ABOUT A GEOLOGICAL DISPOSAL FACILITY



## Having your say on a GDF

Residents comment and have questions answered at Q&A events

**SAFETY**, jobs, transport and the environment were among the many topics you quizzed us about during our very informative Big Picture information sessions.

More than 130 residents attended film and Q&A events – hosted by the Community Partnership at eight locations in the local area – to learn more about geological disposal, ask questions and voice any concerns about potentially hosting a Geological Disposal Facility (GDF) in this part of the country.

One attendee said the information they had received during our event at Withern Village Hall had “opened my mind”, adding: “I came in blinkered.”

### Other feedback received included:

- “Don’t want it [a GDF to be developed in this area].”
- “You’ve convinced me on safety but I’m still to be convinced about a GDF in Theddlethorpe.”
- “Anywhere below ground has got to be better than above ground.”
- “Hurry up! Prove it is safe and get on with it. Seems essential, so why not here?”
- “Great for job opportunities in an area that is lacking in options.”

Safety was the main topic discussed at events, with people keen to learn more about why geological disposal is the safest long-term solution for the highest activity nuclear waste and how a GDF is planned, developed and operated.

One event attendee told us that they found the session “very informative and interesting”, while another said it was “good to hear from the professionals – and it was constructive”.

One resident described the information they received as “very understandable – I enjoyed it”. However, some people felt that “not all [of my] questions [have been] answered”.



**Great for job opportunities in an area that is lacking in options.”**

One resident told us they were “not in favour of nuclear or its waste”, while another attendee said that they were “worried that even the talk of it [a GDF] coming here will cause property values to drop”.

*Continued on page 2*

VISIT THE COMMUNITY ENGAGEMENT TEAM AT THE COASTAL CENTRE ON TUESDAYS BETWEEN 9AM AND 2PM

CONTINUED FROM PAGE 1

# Having your say on a GDF



## THE NUMBERS

132

PEOPLE ATTENDED OUR INFORMATION SESSIONS

8

EVENTS ACROSS THE SEARCH AREA AND NEIGHBOURING TOWNS

57

PEOPLE SIGNED UP TO RECEIVE NEWS FROM THE COMMUNITY PARTNERSHIP

98%

OF ATTENDEES LEFT WITH A BAG OF INFORMATION

95%

OF PEOPLE STAYED FOR THE FULL THREE-HOUR EVENT

People that attended the events had a lot to say and came along with many varied questions.

The majority of these questions were answered directly by the subject matter experts (SMEs) throughout the Q&A sessions. Others that required further information were taken away to be answered in the near future.

There are topics on geological disposal that need further investigation and site evaluation studies to be carried out, in order to be able to provide answers.

In the meantime, if you have questions, please check out the Partnership website, use the online form to contact us, or drop into the Coastal Centre and speak to the Engagement Team.

Some of the Big Picture events were held

just outside the main Search Area, in neighbouring villages, in order to share information across more of the region.

Attendees from these areas – Aby, Saltfleetby, Grimoldby & Manby, and Saltfleet – have all now asked for copies of the Voice to keep updated.

Sharon Darley, our Events

Co-ordinator, said: "We would

like to say a big thank you

to the people that came

to the Big Picture events,

as it was lovely to see

people wanting to

know more. When we

ran the pilot at the

Coastal Centre at the

back end of 2022 with

invited groups, the

feedback we received was

overwhelmingly positive, so

we decided to run more events

using the same film-themed and questions

and answers format, but this time with an

open-door invitation to everyone.

**YOU CAN VISIT US AT THE COASTAL CENTRE ON TUESDAYS 9am-2pm**

Some of the Big Picture events were held just outside the main Search Area, in neighbouring villages, in order to share information across more of the region."

Don't worry if you weren't able to make an event – we have organised more this summer. Please come along, ask questions and join the conversation.

## Our Big Picture events continue this summer

We have added a further six dates and venues, so you can attend one of our film-themed events. If you missed the last ones, we are offering you another opportunity to come along and find out more about geological disposal and ask your questions. Join us for short films, talks and Q&As with geologists, engineers and scientists. We look forward to seeing you at one of our events.

Thursday 3 Aug  
5pm – 8pm  
Great Carlton Village Hall  
Main Road, Great Carlton,  
LN11 8JU

Saturday 5 Aug  
11am – 2pm  
Mablethorpe Community Hall  
Stanley Avenue, Mablethorpe,  
LN12 1DP

Wednesday 9 Aug  
5pm – 8pm  
Legbourne Village Hall  
Chapel Lane, Legbourne,  
LN11 8LW

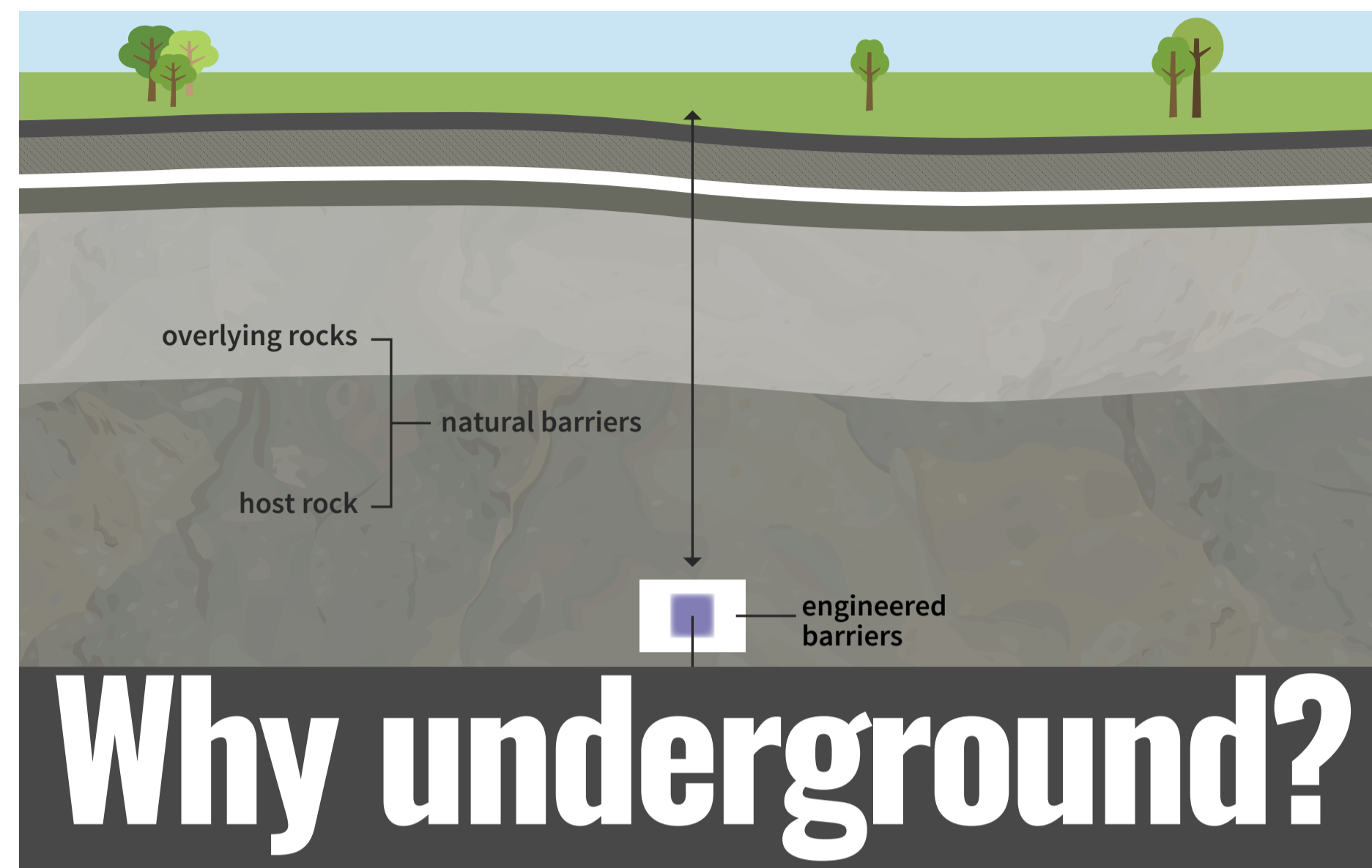
Friday 4 Aug  
5pm – 8pm  
Louth Town FC, Marshlands  
Main Road, Louth,  
LN11 7SS

Tuesday 8 Aug  
5pm – 8pm  
Gayton Le Marsh Village Hall  
Main Street, Gayton Le Marsh,  
LN13 0NW

Friday 11 Aug  
5pm – 8pm  
St Mary's Church Hall  
George Street, Mablethorpe,  
LN12 2BG

Please arrive from either 5pm (weekdays) or 11am (Sat) for refreshments and a chance to talk with our experts. The films and Q&A will start at 6pm (weekdays) or 12noon (Sat)

Details of these events will be shared on the Partnership website, [theddlethorpe.workinginpartnership.org.uk/get-involved/](https://theddlethorpe.workinginpartnership.org.uk/get-involved/) If there are any unexpected changes to these events, we will update them on the website, so please check first.



## Deep disposal and multiple barriers keep people and environment safe

**YOU** might have heard the term 'multi-barrier approach' during discussions about geological disposal. But what is this, exactly?

A combination of natural and man-made barriers will be between us and the waste, and these work together to help safely isolate and contain radioactive waste.

Isolation means putting the waste well away from people and the surface environment. Containment means keeping the waste where it is placed.

Liam Payne, Research Manager for GDF developer Nuclear Waste Services, said: "A GDF cannot be built and operated unless it can be robustly demonstrated to the regulators that it will be safe.

The multi-barrier approach is key to demonstrating this long-term safety and it will be a key factor in how we characterise a site and then subsequently how we construct and operate the GDF so we know that it will remain safe and not cause harm to people and the environment."

In a GDF, the waste will be isolated in sealed vaults and tunnels deep underground, between 200m and 1,000m (656ft and 3,280ft) below the surface.

The radioactive material is then contained here while it decays naturally over time, and is prevented from ever reaching the surface in levels that could cause harm.

### WHAT GOES INTO A GDF?

Only solid radioactive waste will go into a GDF. This makes it safer to handle, transport or dispose of. The solid waste is packaged into secure engineered containers made from a durable material, typically copper, steel or concrete, depending on the type of waste and geology.

The containers are designed to last anywhere between a few hundred years to tens of thousands of years, depending on the nature of the waste inside.

The radioactive waste containers will be carefully placed in a GDF, surrounded by a protective backfill and buffer material.

This backfill of cement or clay prolongs the life of the containers and slows down the release of radioactivity when containers eventually do fail.

The final barrier is the natural barrier

of several hundred metres of stable rock, preventing radioactivity from moving towards the surface when other barriers eventually degrade over the very long timescales.

### MULTIPLE PROTECTION

Once complete, the GDF will provide safety without the need for further action.

Together, these barriers are designed to help provide multiple levels of protection from the waste for many thousands of years, deep underground, far away from people and the environment.

All the time, the levels of radioactivity in the waste will be falling.

Learn more at [bit.ly/multibarrier](https://bit.ly/multibarrier) or visit [theddlethorpe.workinginpartnership.org.uk](https://theddlethorpe.workinginpartnership.org.uk)

## HOW MUCH WASTE GOES INTO A GDF?

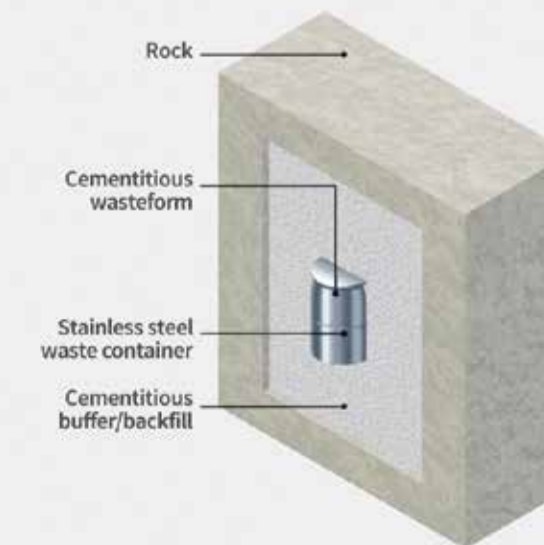
**ROUGHLY** 750,000m<sup>3</sup> of packaged waste could be destined for a GDF – about the same amount as in 300 Olympic-size swimming pools.

We have a large amount of legacy waste to deal with in the UK. This has been building up for over 70 years and while it is currently stored safely above ground, this is not a sustainable solution for the thousands of years the waste continues to be a hazard.

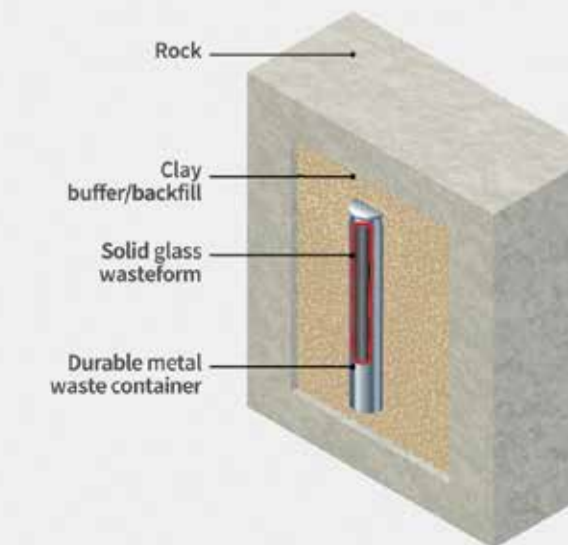


## How the waste will be stored

### Intermediate Level Waste



### High Level Waste



# Getting to know your local environment

We would love to hear how you enjoy your local environment. Complete our form online [theddlethorpe.workinginpartnership.org.uk/contact-us/](http://theddlethorpe.workinginpartnership.org.uk/contact-us/)

## Protecting the landscape and its flora and fauna is a key part of the GDF assessment process and evaluation work

By Charlotte Higgins, Principal Environmental Assessment Manager with NWS

**THE NWS Environmental Assessment Team** is busy getting to know the local environment within and around the Theddlethorpe Search Area.

This forms part of our environmental assessments and evaluation work needed to better understand whether this area is suitable to host a GDF.

Our assessments are undertaken in line with the 'mitigation hierarchy' – to avoid, reduce or mitigate the potential for negative effects – in addition to considering opportunities for Environmental Net Gain.

### WHAT WE KNOW SO FAR

East Lincolnshire's spectacular coastline is home to popular seaside resorts and an abundance of wildlife.

The map on the right shows a small handful of the special environmental features and designated sites located within and adjacent to the Search Area.

### BIODIVERSITY

The remote coastline is a rich habitat for a variety of coastal flora and fauna.

Habitats within the Search Area include coastal salt marsh, sand dunes, coastal floodplain and grazing marsh, and support more than 1,000 species of important plants and animals.

Some of these habitats are designated as 'priority habitats' and they include deciduous woodland and grassland of principal importance.

The Humber Estuary supports the most north-easterly breeding site of the protected natterjack toad and a breeding colony of protected grey seals.

Important breeding populations of bird species – including bittern, marsh harrier, avocet and little tern – are supported by Special Protection Areas, while the Saltfleetby-Theddlethorpe Dunes, a Special Area of Conservation, have excellent examples of shifting dunes.

### FLOOD RISK

The low-lying nature of the coastal floodplain and former fen and marshland within the Search Area means there is a threat of surface water flooding and a risk of flooding from rivers and sea, particularly along the coast, where the majority of land is located within Environment Agency

### LINCOLNSHIRE WILDLIFE TRUST

Tammy Smalley, Head of Conservation for Lincolnshire Wildlife Trust and a member of the Community Partnership, said: "The offshore and intertidal areas support an amazing array of wildlife, reflected in the myriad of nature conservation designations from a local to global scale.

"I am representing that wildlife on the Community Partnership, to ensure it has a voice and that it is taken into account from the outset in the decision-making process. "The biodiversity and climate crises need to be taken into account in all our decisions as a society."

Flood Zone 3 (high risk). There are coastal flood defences located along the length of the coast within, and adjacent to, the Search Area, which were built following a major tidal surge in 1953.

### LANDSCAPE

The landscape in East Lincolnshire holds a special unique character. It is a living working landscape, with woodland, grassland and abandoned chalk pits providing habitats for rare flowers and wildlife.

### HERITAGE

Built heritage in the Search Area includes six Scheduled Monuments relating to the 11th and 12th centuries. There are also 58 listed buildings.

### NEXT STEPS

We will be pleased to share the findings from our work, when we are able. In addition, we aim to engage with local partners, such as nature conservation bodies, to consider opportunities to improve the environment for both wildlife and local communities. This will include the marine environment.

Find out more at [theddlethorpe.workinginpartnership.org.uk/finding-a-suitable-site](http://theddlethorpe.workinginpartnership.org.uk/finding-a-suitable-site)

### BIODIVERSITY

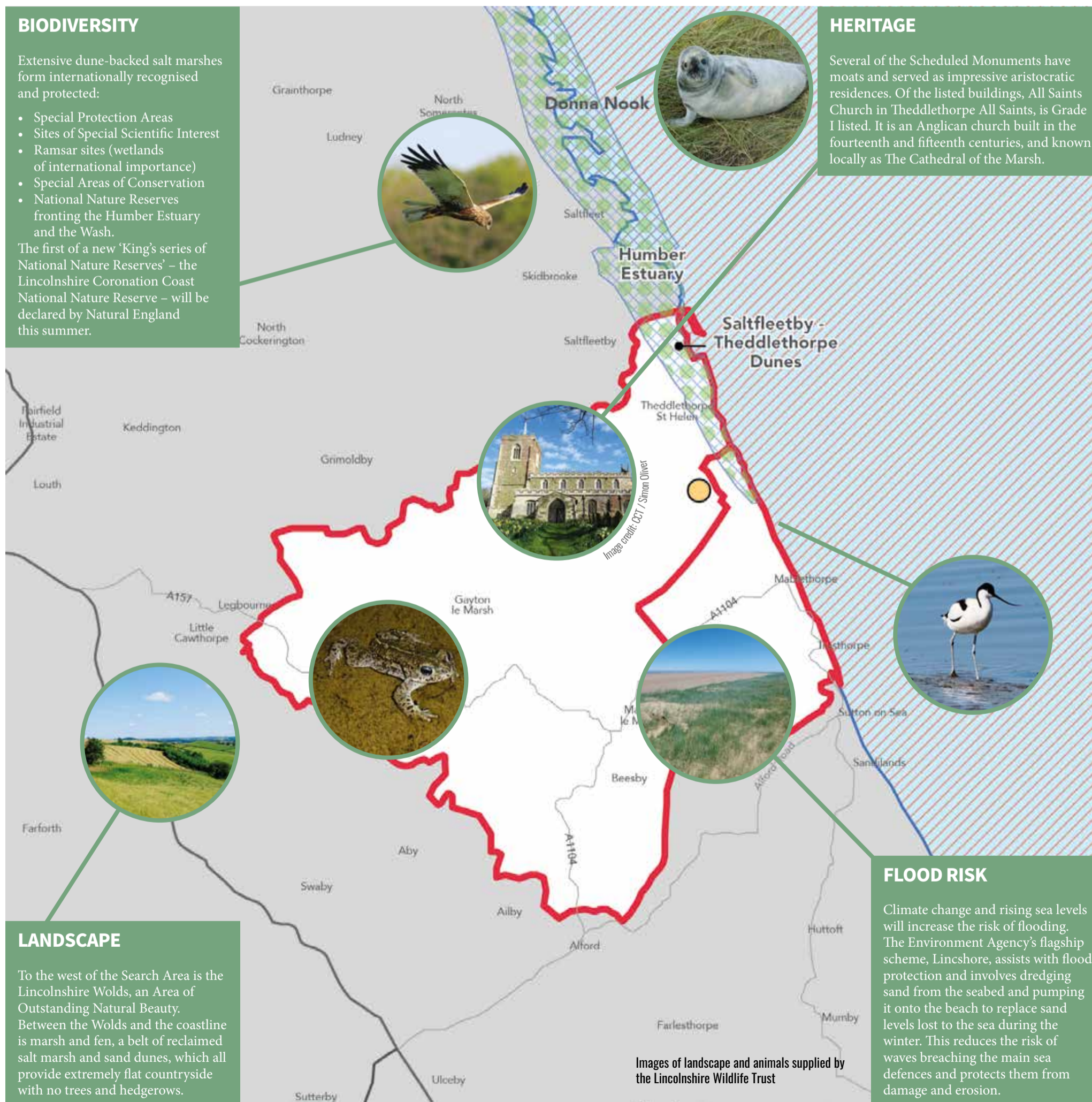
Extensive dune-backed salt marshes form internationally recognised and protected:

- Special Protection Areas
- Sites of Special Scientific Interest
- Ramsar sites (wetlands of international importance)
- Special Areas of Conservation
- National Nature Reserves fronting the Humber Estuary and the Wash.

The first of a new 'King's series of National Nature Reserves' – the Lincolnshire Coronation Coast National Nature Reserve – will be declared by Natural England this summer.

### HERITAGE

Several of the Scheduled Monuments have moats and served as impressive aristocratic residences. Of the listed buildings, All Saints Church in Theddlethorpe All Saints, is Grade I listed. It is an Anglican church built in the fourteenth and fifteenth centuries, and known locally as The Cathedral of the Marsh.



### LANDSCAPE

To the west of the Search Area is the Lincolnshire Wolds, an Area of Outstanding Natural Beauty. Between the Wolds and the coastline is marsh and fen, a belt of reclaimed salt marsh and sand dunes, which all provide extremely flat countryside with no trees and hedgerows.

### FLOOD RISK

Climate change and rising sea levels will increase the risk of flooding. The Environment Agency's flagship scheme, Lincsore, assists with flood protection and involves dredging sand from the seabed and pumping it onto the beach to replace sand levels lost to the sea during the winter. This reduces the risk of waves breaching the main sea defences and protects them from damage and erosion.

## Selecting a suitable site

The GDF developer, NWS, will take into account six siting factors as they search for a site:

**SAFETY AND SECURITY** – is the rock suitable?

**COMMUNITY** – what would be the impact and opportunities locally?

**ENVIRONMENT** – is the area suitable?

**TRANSPORT** – what are local transport links like?

**ENGINEERING FEASIBILITY** – is construction possible?

**VALUE FOR MONEY** – is it value for money for taxpayers?

For more information on the siting factors, visit [theddlethorpe.workinginpartnership.org.uk/finding-a-suitable-site/](http://theddlethorpe.workinginpartnership.org.uk/finding-a-suitable-site/)

## SITE EVALUATION STUDIES UNDERWAY

In future issues, we aim to provide information on desk-based studies that NWS are carrying out, as part of site evaluation work.

Investigations have begun to understand the suitability of the area to host a GDF and the studies will look at the feasibility of delivering a surface facility

connected to the geology off the coast.

The first studies will look at existing data and address topics such as flooding, skills and development, visitor economy, transport, and geology. Further studies will be considered.

Learn more at [bit.ly/GDFSiteEvaluation](http://bit.ly/GDFSiteEvaluation)

Here is an indicative timeline for the community consent-based process to be undertaken in England and Wales to find a suitable site for a GDF.

## Working with Communities

### Our Current Position

	1 – 5yrs duration	10 – 15yrs duration	100+ yrs duration
<b>People</b>	Initial conversations, working group, establishing partnerships with communities, providing information	Developing a vision, providing information, funding and support for each community Realising local plans for benefits and investment	Continued investment in supply chain, skills, infrastructure, etc
<b>Place</b>	Desktop research and site evaluation	Site investigations, designing and planning Site selection and final decision	Construction, operation and closure
<b>Investment</b>	Up to £1m per year per community	Up to £2.5m per year per community during borehole investigations	Significant investment package for the host community

FRANCE APPLIES FOR GDF CONSTRUCTION LICENCE



# A 'crucial step' ahead

French say safe, long-term disposal of waste is an ethical responsibility

**FRANCE** is among the countries making great progress in developing a GDF.

The French national radioactive waste management agency, Andra, submitted a construction licence application in January for its Cigéo project (Industrial Centre for Geological Disposal).

This is a GDF for radioactive waste to be built at a site straddling the Meuse and Haute-Marne districts in the north east of the country.

The facility will dispose of highly radioactive, long-lived waste produced by France's nuclear facilities.

Andra has said this "crucial step" follows more than 25 years of research work.

**PROTECTING PEOPLE AND THE ENVIRONMENT**

The Cigéo project – which is similar to GDFs under construction or under consideration worldwide – aims to protect people and the environment from the danger posed by radioactive waste by disposing of it deep underground, which isolates the waste from the surface by housing it in suitable rock, which provides containment.

Andra has said that deep disposal meets the "ethical responsibility" of not passing on to future generations the responsibility for waste created now.

The developer added: "We are demonstrating our responsibility to future generations, especially against the background of uncertainty in our society, to make sure that we do not leave them with the burden of the radioactive waste that we have produced."

**SAFEST SOLUTION**

The French parliament embraced the principle of deep geological disposal more than 10 years ago, believing it to be the safest solution for radioactive waste.

France is not alone in opting for deep geological disposal – this is the favoured option across Europe, internationally and here in the UK.

Like Nuclear Waste Services (NWS), the GDF developer in the UK, French agency Andra, is committed to an active, joint construction process with the community.

This approach involves ongoing discussion with the planned GDF's neighbours, as well as a consultation with the region's stakeholders.

**EMPLOYMENT AND TRAINING**

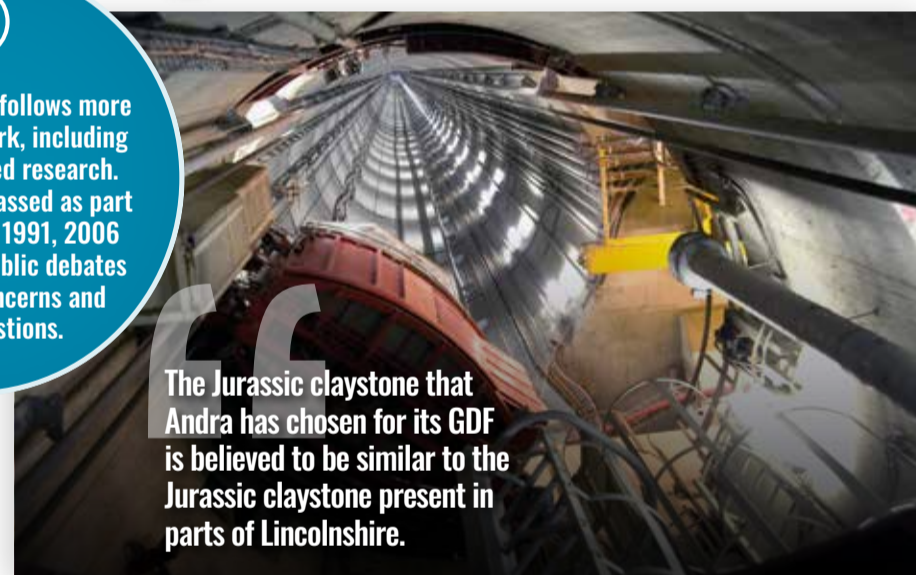
Andra has said Cigéo represents an opportunity for the host region, particularly in terms of employment – even before construction begins, jobs will be created by site preparation and preliminary development.

The GDF's construction will require up to 2,000 people over five years. The workforce will stabilise at around 600 people during site operation. Cigéo will also generate indirect jobs for more than a century.

Andra is also involved in training young people through partnership agreements with the Universities of Lorraine and Champagne-Ardenne, as well as local vocational colleges.

The agency also welcomes students for work-study programmes and

The Cigéo project follows more than 25 years' work, including regularly reviewed research. Three laws were passed as part of the project, in 1991, 2006 and 2016, with public debates held to hear concerns and answer questions.



The Jurassic claystone that Andra has chosen for its GDF is believed to be similar to the Jurassic claystone present in parts of Lincolnshire.

internships, and supports doctoral theses on subjects related to its activities.

Dr Simon Norris, NWS Principal Research Manager, said: "NWS and Andra have worked together for decades. Such international collaboration ensures effective knowledge exchange, the sharing of ideas and experiences, and is very cost-effective and time-efficient."

"The Jurassic claystone that Andra has chosen for its GDF is believed to be similar to the Jurassic claystone present in parts of Lincolnshire."

Learn more at [international.andra.fr/](http://international.andra.fr/)

**FINDING THE RIGHT HOME**

THE location for the Cigéo GDF was chosen because of the suitable geology of the area. The host rock is 160 million years old, 145 metres (476ft) thick and between 400 and 600 metres underground.

A spokesperson for Andra said: "The disposal facility's depth and design, and the type of rock in which it is located, as well as the geological stability, mean that the waste can be isolated from human activity and natural events on the surface (e.g. erosion and glaciation) in the very long term."

"Once closed, the facility will not require any further human intervention: the safety of the site is described as 'passive'."

Learn more at [bit.ly/CigeoProject](http://bit.ly/CigeoProject)

# Your opportunity to get involved

Your Community Partnership is looking for members



**DO** you want to be involved in discussions about the possibility of having a Geological Disposal Facility (GDF) in the area?

The Community Partnership is currently looking for two members from the business community – and the Community Engagement Team is encouraging all residents to drop in to see them and ask questions at the Coastal Centre.

The aim of the Partnership and Engagement Team is to share information, discuss concerns and answer the questions of people living and working in the Search Area.

So whether you want to know more about the siting process for a GDF, what hosting one could mean for this area and how the community will benefit, or you

want to learn more about the safety of the project, please get in touch.

Your Community Partnership is made up of people from three sectors – local authorities (including county, district and town and parish councils), community/voluntary and business, plus an independent Chair and a representative from the GDF developer, Nuclear Waste Services (NWS).

There are two business representative vacancies still to be filled – so please get in touch if you would like to join and be involved.

You can get more information on recruitment and complete our online application at [theddlethorpe.workinginpartnership.org.uk/get-involved/join-us/](http://theddlethorpe.workinginpartnership.org.uk/get-involved/join-us/)

Visit the team at the Coastal Centre or send us a message using the online form on the Partnership website

## Supporting the Partnership

Here at the Community Partnership we are pleased to bring you regular updates via this newspaper. The Voice is an opportunity to reflect all views on the GDF project, alongside the main partners round the table, and so our aim is to open up discussions and feature questions, comments and content from more groups and organisations.

Jon Compton is the new Community Engagement Manager and he will be the Nuclear Waste Services representative on the Community Partnership.

He explains: "I am here to listen and provide reassurance about any concerns that the community may have. Primarily my job is to inform and to help take the Partnership through the process of exploring what opportunities there may be, rather than lobbying for a particular course of action."

"I do genuinely believe that this Community Partnership must be the advocate for the community and on a personal level the opportunity to play a role in providing genuine material benefit to the area is one I simply couldn't turn down."

I am here to listen and provide reassurance about any concerns that the community may have.

Jon and the wider team will help the Partnership engage within the community and discuss geological disposal and what a GDF would mean, during a programme of events.

We hope you will get involved with the work of the Partnership and meet the team in person. They will be available to speak to people at the Coastal Centre in Mablethorpe every week, on a Tuesday, so please drop in.

If you prefer you can contact us via the form on the Partnership website: [theddlethorpe.workinginpartnership.org.uk/contact-us/](http://theddlethorpe.workinginpartnership.org.uk/contact-us/)

## YOUR COMMUNITY PARTNERSHIP MEMBERS ARE...



Jon Collins, Interim Chair of the GDF Community Partnership



Craig Leyland, East Lindsey District Council



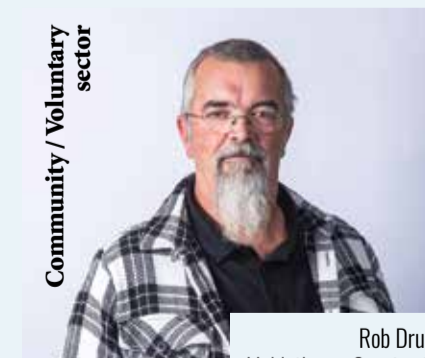
Martin Hill, Lincolnshire County Council



David Fannin, Lincolnshire Community & Voluntary Service



Tammy Smalley, Lincolnshire Wildlife Trust



Rob Druce, Mablethorpe Coastwatch



Gareth Rowland, Hollivans



Carl Richardson, The Dunes

Simon Acklam, Parish Council Representative for Withern & Theddlethorpe, Ken Smith (GOTEC). Jon Compton (Nuclear Waste Services), a new representative from the Town Council is to be appointed following the election, 2 vacant business sector positions.

# Awarding £1m funding



Work is well under way to distribute up to £1 million worth of Community Investment Funding (CIF) each year in this area.

Theddlethorpe GDF Community Partnership has been working closely with local people who have expressed an interest in applying for a grant to help ensure that this funding benefits the residents of the Search Area.

Since the Community Partnership was formed, the CIF grants team has been helping those people interested in applying for some money by sharing the information they need and advising on how to complete the application process.

The first year of funding closes at the end of this month, with year two funding available between July 2023 and June 2024.

The Partnership has established a Community Investment Panel (CIP) to make the decisions about which applications are awarded a grant.

Three people from outside the Partnership are being invited to join the panel. Anyone wishing to volunteer to be part of this important work should contact the Partnership.

People will be selected through an open recruitment process and interview.

Up to £1 million per year is available to communities in the Search Area (the wards of Withern & Theddlethorpe and Mablethorpe) while the Partnership takes part in the siting process for a GDF.

Funding is available to support projects that:

- Provide economic development opportunities
- Enhance the natural and built environment
- Improve community wellbeing.

Three Community Partnerships in Cumberland have all awarded £1 million funding in their first year. A total of 83 projects were given grants across all three areas.

The Theddlethorpe Community Partnership is keen to hear from groups and individuals with projects that could be eligible for the funding.

To learn more visit [www.theddlethorpe.workinginpartnership.org.uk/community-investment-funding](http://www.theddlethorpe.workinginpartnership.org.uk/community-investment-funding)



Jon Collins

## Bring your expertise to the Community Partnership

By Jon Collins

Work continues with the GDF Community Partnership and we have set up the panel that will start allocating Community Investment Fund grants locally, for the benefit of projects and people in this area.

We want a panel that includes three people who are not Partnership members, so we are asking for volunteers to come forward. If you are interested or just want to find out more, please get in touch.

**“It was good to see so many people attending with an open mind and keen to find out more about what a GDF could mean for this area.”**

The Partnership hosted a series of Big Picture events throughout March and April and I was pleased to get the chance to chat to local residents and experts from the GDF developer, Nuclear Waste Services.

It was good to see so many people attending with an open mind and keen to find out more about what a GDF could mean for this area. We are pleased to be holding more of these events in August, so please take the opportunity to join an event near you.

Finally, we are still looking for business people from the area interested in bringing their knowledge and experience to the Partnership. So if that is you, or if you know someone who might be interested, please get in touch.

As always, we are happy to answer your questions and hear your thoughts. You can find the team at the Coastal Centre and contact us via the website.

Jon Collins is the Interim Chair of the GDF Community Partnership.

## What you think so far

“Good to hear from professionals – informative and constructive”

“I’d like info on the possible rail route”

“Can see community concern, but also investment in the area and future job opportunities for generations”

“Ultimately, I would be against it”

“Essential for our future”

Join the GDF conversation



@TheddlethorpeCP



[www.theddlethorpe.workinginpartnership.org.uk](http://www.theddlethorpe.workinginpartnership.org.uk)

Accessibility help: If you would like the information in this document in a different format, please contact us using the form on the Partnership website.