



Theddlethorpe GDF
Community Partnership

How do I apply for funding?

GDF Community
Investment Funding



What is Community Investment Funding?

£1 million is available each year from central government for communities involved in the siting process for a Geological Disposal Facility (GDF).

This Community Investment Funding (CIF) is managed by the Theddlethorpe GDF Community Partnership through the Community Investment Panel (CIP).

The Panel are members of the community who volunteer their time and expertise to ensure that decisions are made by the community, for the community.

About the Community Investment Team

Our Community Investment Team will support the CIP in their role, as well as groups and organisations applying for or receiving grants.

We welcome your funding applications and are ready to work with you on your ideas and what you want to achieve.

Let us help you to make a difference for the community in your area.



What can the Community Investment Funding be used for?

The funding can be used to support projects, schemes or initiatives that provide economic development opportunities, enhance the natural and built environment, or improve community wellbeing.

Within these three main principles, the Community Partnership may also agree locally specific criteria. Contact the Community Investment Team for further guidance.

Provide economic development

For example, employment opportunities, job creation, skills development, education or training, promotion of local enterprise, long-term economic development, or economic diversification.

Enhance the natural or built environment

For example, supporting cultural and natural heritage, especially where economic benefits, for example through tourism, can be demonstrated.

Improve community wellbeing

For example, improvements to community and sports facilities, enhancement of the quality of life or health and wellbeing of the community.

Who can apply?

We are open to applications from community groups, public sector organisations and businesses that want to do something to benefit the community.



Is your organisation eligible?

Properly constituted private, public and third sector organisations can apply for funding.

Organisations can also apply together but would require one organisation to act as lead organisation for the partnership and 'accountable body' for the funding.

If you are an unconstituted organisation it might be possible for another organisation to apply on your behalf.

Individuals may not apply for funding for their own personal use.

Guidance and support

We are here to make your grant application as smooth as possible. It often starts with a chat about your organisation and your needs.

If you are not sure where to start, do not worry, we are here to help, so just contact us to chat through your plans.

That way, when you are ready to put in a grant application, you are much more likely to be successful.

How much can you apply for?

You can apply for a small, medium, or large grant:

- **Small grants:**
under £10,000
- **Medium grants:**
£10,000 to £50,000
- **Large grants:**
above £50,000



Mablethorpe OAP Association

How long do you have to spend the grant?

This will be covered as part of the agreement if you are accepted for a grant. It will be specific to each project and will relate to the information you have provided on your application form about your expected project lifetime.

All eligible costs must be incurred during the lifetime of the project.

Please discuss your grant request and funding needs with us before applying.

Not sure where to start? We can help.

The Community Investment Team will be happy to answer your questions and provide pre-application guidance and support. This will include guidance on eligibility criteria, how to apply and practical help with the application form.

A summary of the funding application process is on our website: theddlethorpe.workinginpartnership.org.uk

The team can signpost you to sources of support and guidance if needed.

Make a funding application

All applications will be through our online grants management system.

Contact us if you need help to access and use the system.

Scan here:



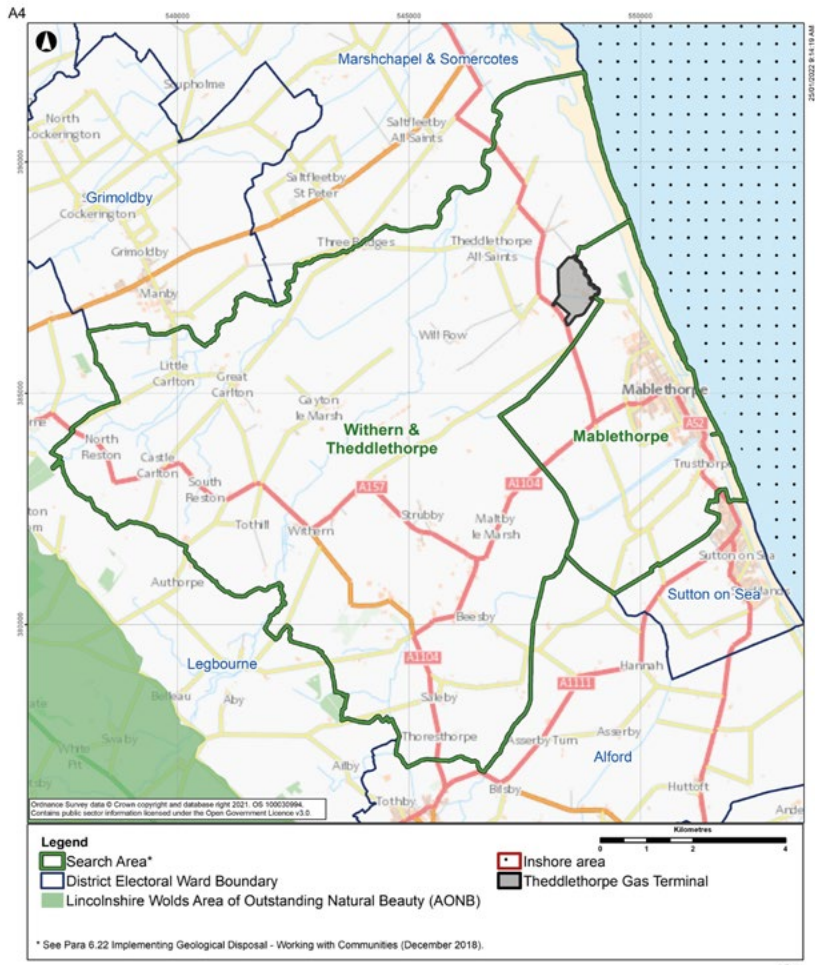
When will you know the outcome of your application?

Applications for funding will be assessed by the Community Investment Panel every eight weeks.

You will then be notified of the outcome and any next steps.

Will your project help people living and working within the Search Area?

Community Investment Funding must be used for the benefit of communities within this area:





**Theddlethorpe GDF
Community Partnership**

Contact us



0300 369 0000



communityinvestment
-theddlethorpe@nuclearwasteservices.uk



Freepost THEDDLETHORPE
COMMUNITY PARTNERSHIP



theddlethorpe.workinginpartnership.
org.uk/community-investment-funding

Data Protection and GDPR

Your information will be processed in accordance with UK Data Protection laws, and we have robust systems in place to keep your information safe. Your information will be stored on our secure systems and shared with relevant individuals where necessary to process your query.

Please see our full privacy notice at: theddlethorpe.workinginpartnership.org.uk/utility/privacy-policy